

CUSTOMER APPROVAL

COMPANY

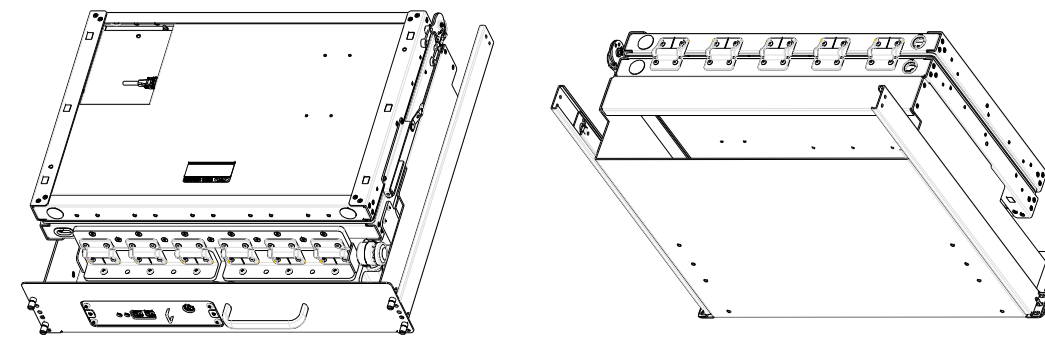
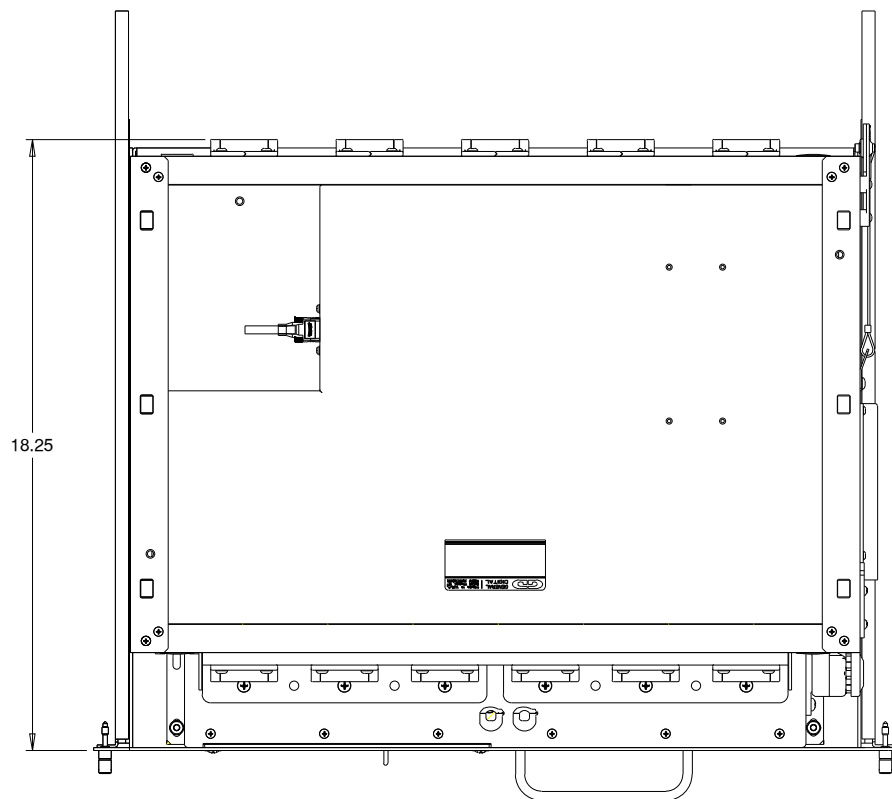
NAME (PRINT)

DATE

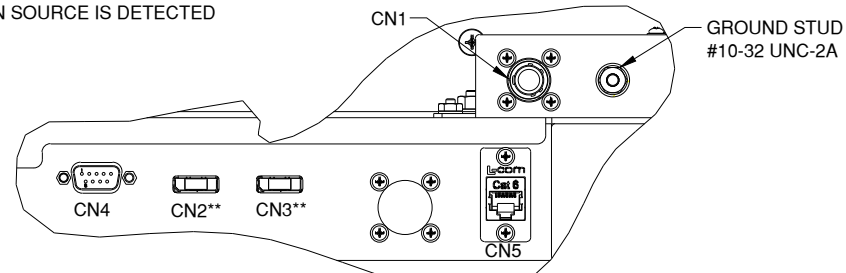
SIGNATURE

CLOSED / STOWED

90-2215-003

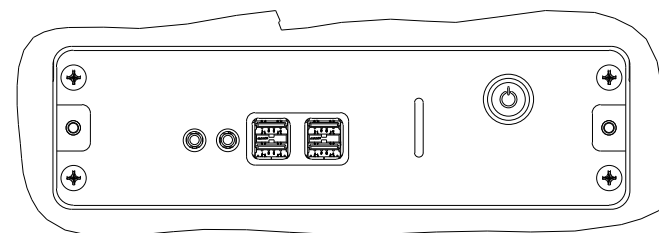


** DISPLAYPORT INPUTS CONFIGURED TO SWITCH VIDEO WHEN SOURCE IS DETECTED



DETAIL B
SCALE 1.000

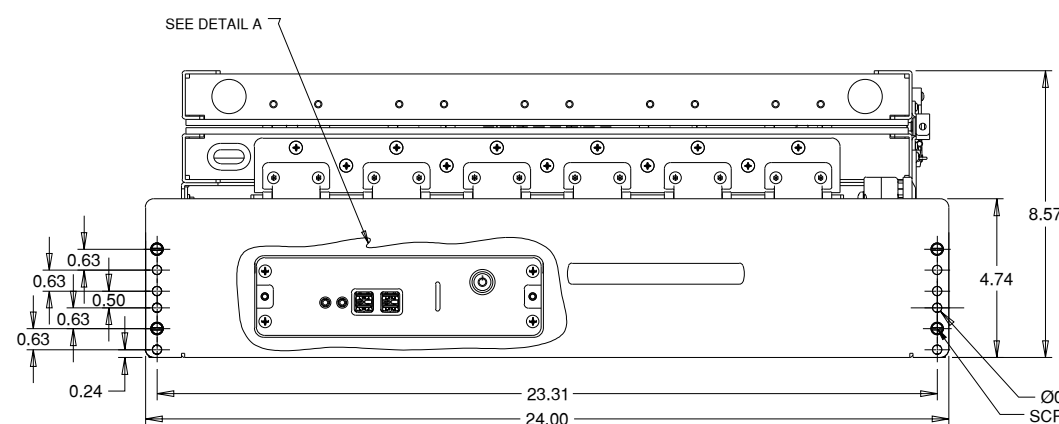
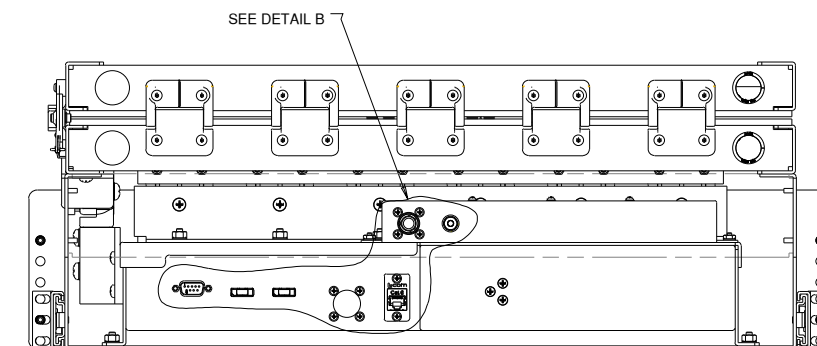
GROUND STUD
#10-32 UNC-2A



DETAIL A
SCALE 1.000

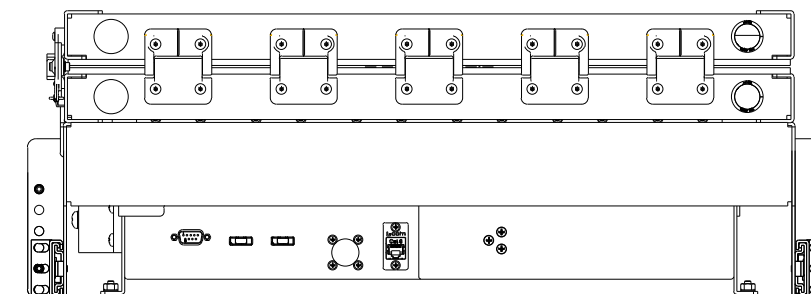
ZERO CLIENT INTERFACE:

- POWER SWITCH
- USB 2.0 (X4)
- 3.5mm MICROPHONE JACK
- 3.5mm HEADPHONE JACK



SEE DETAIL A

Ø0.28
SCREW CAPTIVE KNURL, #10-32 x 1 1/2 SS (x4)



SHEET 1 OF 3

NOTES:
1. ALL FIELD REPLACEABLE PARTS ARE ABLE TO BE CHANGE WITH COMMON TOOLS.

THIS DOCUMENT CONTAINS PROPRIETARY INFORMATION OF GENERAL DIGITAL AND IS NOT TO BE DISCLOSED, REPRODUCED OR PUBLISHED WITHOUT WRITTEN CONSENT FROM GENERAL DIGITAL. THIS DOCUMENT MUST BE RENDERED ILLEGIBLE WHEN BEING DISCARDED. © COPYRIGHT 2019. ALL RIGHTS RESERVED.

UNLESS OTHERWISE SPECIFIED DIMENSIONS ARE IN INCHES
TOLERANCES ARE:
FRACTIONS DECIMALS ANGLES
±1/32 .X ±.050 ±0° 30'
.XX ±.031
.XXX±.020

CONNECTOR CHART

DESIGNATION	FUNCTION	TYPE
CN1	AC POWER INPUT	D38999/20WA98PN
CN2**	DISPLAYPORT INPUT - BOTTOM	DISPLAYPORT
CN3**	DISPLAYPORT INPUT - TOP	DISPLAYPORT
CN4	PROGRAMMING PORT	DE-9-P
CN5	ETHERNET INPUT	RJ45

MECHANICAL OUTLINE ONLY. SPECIFICATIONS SUBJECT TO CHANGE WITHOUT NOTICE. U.O.S. ALL DIMENSIONS ARE IN INCHES.

APPROVALS	DATE
DRAWN FA	27-May-20
CHECKED	
APPROVED	

DO NOT SCALE DRAWING



Engineering What's Next

8 Nutmeg Road South, South Windsor, CT 06074
(860) 282-2900 www.GeneralDigital.com

21.5" DUAL VERTICAL MONITOR
RACK MOUNT CONFIGURATION

REV	DATE	ECN	DESCRIPTION	BY
B				

CAGE CODE	DWG. NO.	REV
1JA77	2215-003-97	-

REV	DATE	ECN	DESCRIPTION	BY

CUSTOMER APPROVAL

COMPANY _____

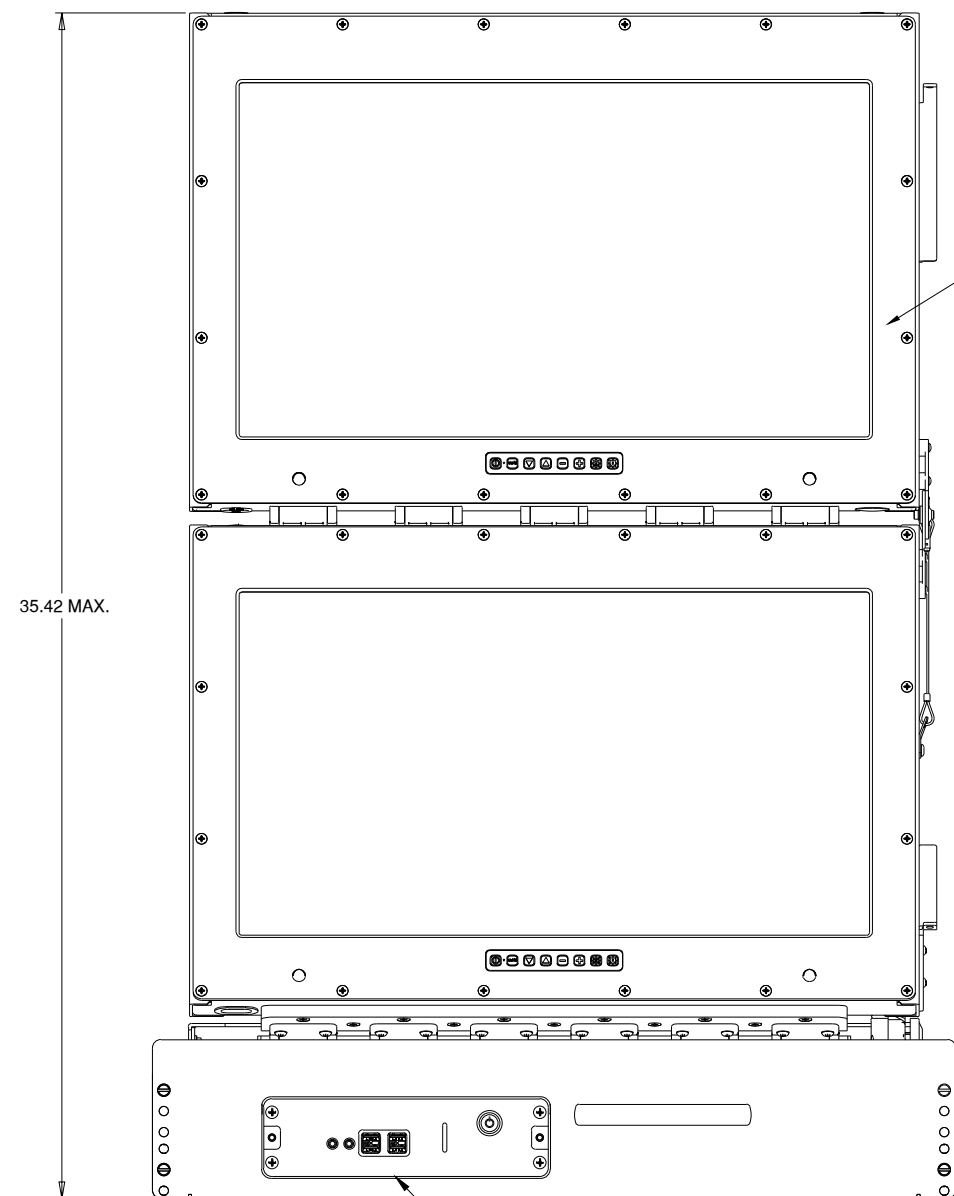
NAME (PRINT) _____

DATE _____

SIGNATURE _____

OPEN / DEPLOYED

90-2215-003

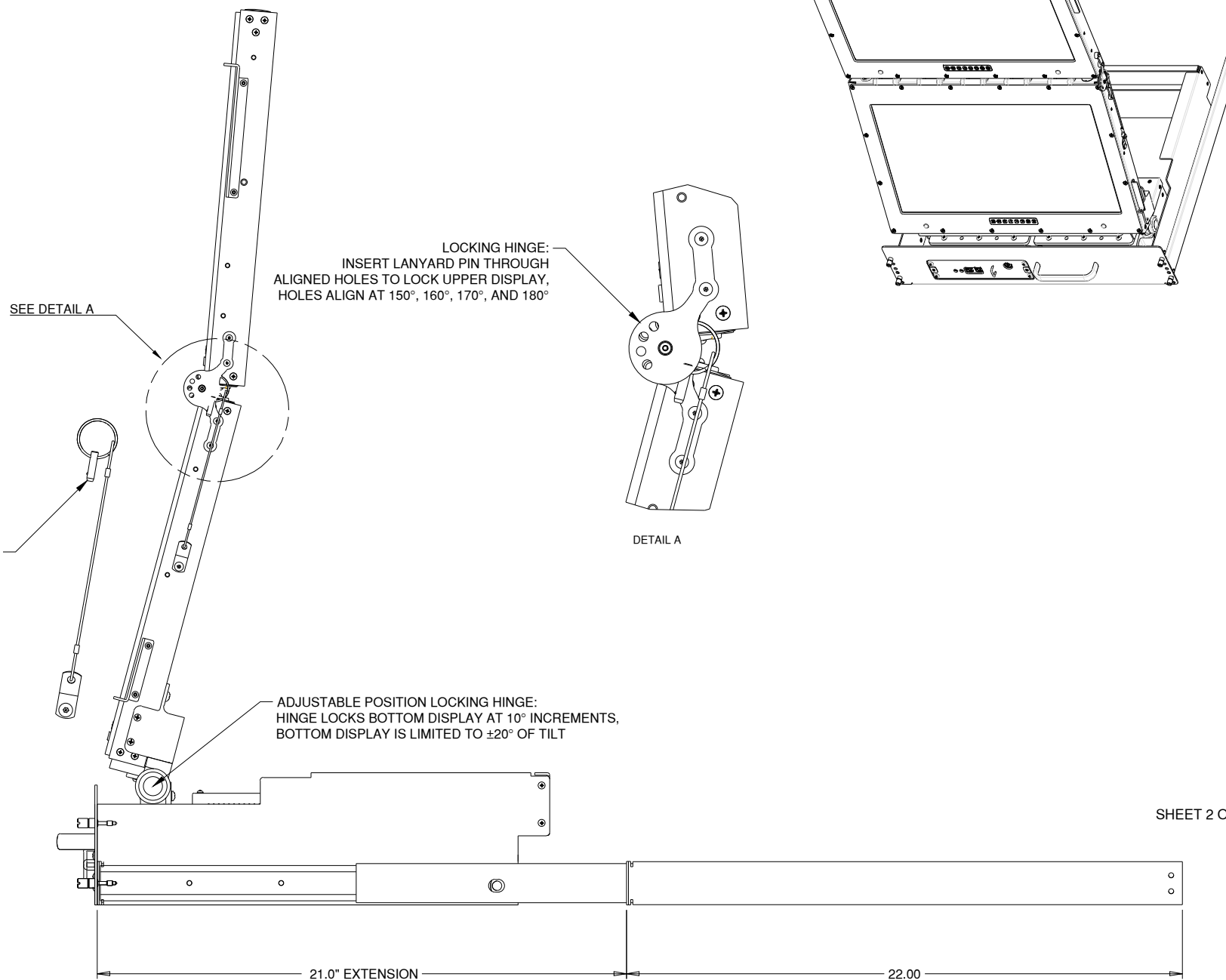


FIELD REPLACABLE MONITOR
GDC P/N 90-3215-039 (x2)

SEE DETAIL A

STAINLESS STEEL QUICK-RELEASE
PIN WITH RING-GRIP & LANYARD

FIELD REPLACABLE
ZERO CLIENT CARTRIDGE:
GDC P/N 90-1501-001



LOCKING HINGE:
INSERT LANYARD PIN THROUGH
ALIGNED HOLES TO LOCK UPPER DISPLAY,
HOLES ALIGN AT 150°, 160°, 170°, AND 180°

DETAIL A

ADJUSTABLE POSITION LOCKING HINGE:
HINGE LOCKS BOTTOM DISPLAY AT 10° INCREMENTS,
BOTTOM DISPLAY IS LIMITED TO ±20° OF TILT

SHEET 2 OF 3

THIS DOCUMENT CONTAINS PROPRIETARY INFORMATION OF GENERAL DIGITAL AND IS NOT TO BE DISCLOSED, REPRODUCED OR PUBLISHED WITHOUT WRITTEN CONSENT FROM GENERAL DIGITAL. THIS DOCUMENT MUST BE RENDERED ILLEGIBLE WHEN BEING DISCARDED. © COPYRIGHT 2019. ALL RIGHTS RESERVED.

UNLESS OTHERWISE SPECIFIED DIMENSIONS ARE IN INCHES
TOLERANCES ARE:
FRACTIONS DECIMALS ANGLES
±1/32 .X ±.050 ±0° 30'
.XX ±.031
.XXX±.020

CONNECTOR CHART

DESIGNATION	FUNCTION	TYPE
CN1	AC POWER INPUT	D38999/20WA98PN
CN2**	DISPLAYPORT INPUT - BOTTOM	DISPLAYPORT
CN3**	DISPLAYPORT INPUT - TOP	DISPLAYPORT
CN4	PROGRAMMING PORT	DE-9-P
CN5	ETHERNET INPUT	RJ45

MECHANICAL OUTLINE ONLY.
SPECIFICATIONS SUBJECT TO
CHANGE WITHOUT NOTICE. U.O.S.
ALL DIMENSIONS ARE IN INCHES.

APPROVALS		DATE
DRAWN	FA	27-May-20
CHECKED		
APPROVED		
DO NOT SCALE DRAWING		

GD GENERAL DIGITAL
Engineering What's Next

8 Nutmeg Road South, South Windsor, CT 06074
(860) 282-2900 www.GeneralDigital.com

21.5" DUAL VERTICAL MONITOR
RACK MOUNT CONFIGURATION

B	CAGE CODE	DWG. NO.	REV
	1JA77	2215-003-97	-

REV	DATE	ECN	DESCRIPTION	BY

CUSTOMER APPROVAL

90-2215-003

COMPANY	NAME (PRINT)
DATE	SIGNATURE

CN1 - AC Power Input	
Type: D38999/20WA98PN	
Pin Position	Signal
A	Live
B	Neutral
C	Chassis Ground

CN4 - USB Input	
Type: DE-9-P	
Pin Position	Signal
1	N.C.
2	USB Ground
3	V _{USB IN}
4	Data -
5	N.C.
6	Data +
7	N.C.
8	N.C.
9	Chassis Ground

Feature	Value	Unit
Display		
Size (Diagonal)	21.5	in.
Active Area	18.765 (H) x 10.556 (V)	in.
Resolution	1920 x 1080	Pixels
Colors	16.7 Million (8-bit)	
Viewing Angle (H/V)	±89 / ±89	Degrees (°)
Refresh Rate	60	Hz
Optical		
Brightness (Max)	250	Nits
Dimming Range	10 - 100	%
Contrast	5000:1	
Backlight Type	LED (Single Rail)	
Power		
Input	90 - 264	VAC
Frequency	47 - 63	Hz
Power Consumption (Est)	TBD	W
Environmental		
Operating Temperature	0 - +50	°C
Storage Temperature	-20 - +70	°C
Humidity	5 - 90	%RH
Vibration	MIL-STD-810G (Designed to Comply)	
Shock	MIL-STD-810G, Section 516.6, Procedure IV - Transit Drop (Designed to Comply)	
EMI	MIL-STD-461G & MIL-STD-464C (Designed to Comply)	
Mechanical		
Finish	CARC, Color: #36173 OCEAN GREY	

ACCESSORIES:

- 90-750-107 : KEYBOARD
- 750-107-03 : EXTERNAL KEYBOARD CABLE

SHEET 3 OF 3

THIS DOCUMENT CONTAINS PROPRIETARY INFORMATION OF GENERAL DIGITAL AND IS NOT TO BE DISCLOSED, REPRODUCED OR PUBLISHED WITHOUT WRITTEN CONSENT FROM GENERAL DIGITAL. THIS DOCUMENT MUST BE RENDERED ILLEGIBLE WHEN BEING DISCARDED. © COPYRIGHT 2019. ALL RIGHTS RESERVED.

UNLESS OTHERWISE SPECIFIED DIMENSIONS ARE IN INCHES
TOLERANCES ARE:
FRACTIONS DECIMALS ANGLES
±1/32 .X ±.050 ±0° 30'
.XX ±.031
.XXX±.020

CONNECTOR CHART		
DESIGNATION	FUNCTION	TYPE
CN1	AC POWER INPUT	D38999/20WA98PN
CN2**	DISPLAYPORT INPUT - BOTTOM	DISPLAYPORT
CN3**	DISPLAYPORT INPUT - TOP	DISPLAYPORT
CN4	PROGRAMMING PORT	DE-9-P
CN5	ETHERNET INPUT	RJ45

MECHANICAL OUTLINE ONLY. SPECIFICATIONS SUBJECT TO CHANGE WITHOUT NOTICE. U.O.S. ALL DIMENSIONS ARE IN INCHES.	
APPROVALS	DATE
DRAWN FA	27-May-20
CHECKED	
APPROVED	
DO NOT SCALE DRAWING	



21.5" DUAL VERTICAL MONITOR
RACK MOUNT CONFIGURATION

REV	DATE	ECN	DESCRIPTION	BY

B	CAGE CODE	DWG. NO.	REV
	1JA77	2215-003-97	-