

# IMPACT™ SERIES

Military-/Industrial-Grade Open Frame LCD Monitor Kits



Impact 12.1 with custom mounting panel

In its native form, the **Impact Series** is intentionally designed as the most basic turnkey monitor General Digital produces for OEMs, VARs and Integrators. The display, control electronics and cabling are secured to a sturdy, metal mounting frame, which facilitates integration into your existing products, consoles, protective enclosures or kiosks.

Included in every unit are the latest advances in LCD display technology, such as active matrix TFT screens producing millions of colors (if not billions), wide viewing angles, and fast response times. We qualify multiple sources of supply to ensure product availability and long life cycles.

General Digital offers a series of optional bezels and enclosures that allow Impact monitor kits to be transformed into standalone, panel mount or rack mount monitor units.

The low power units are designed to operate from a single +12V regulated source. Customers can provide their own power supply, request a custom supply, or choose our standard power supply configuration, featuring a power-factor-corrected AC switching supply.

## STANDARD FEATURES

- » Sturdy metal mounting frames/panels simplify OEM integration
- » 6.5" to 24.0" LCD screens (inquire about other sizes)
- » VGA (640 x 480) to 4K UHD (3840 x 2160) resolution
- » Support for most video inputs, including:
  - › ARGB
    - Separate
    - Composite
    - Sync-On-Green
  - › Composite
    - NTSC
    - DVI-D
    - HDMI
- » Built to meet many military standards, including:
  - › MIL-DTL-901, MIL-STD-810, MIL-STD-167, MIL-STD-461
  - › UL 60950 & FCC Class A Certification

## AVAILABLE OPTIONS

- » Support for SECAM, PAL, RS-170, DisplayPort
- » High brightness levels, including brightness dimming control
- » NVIS-compatible displays in compliance with MIL-STD-3009
- » Numerous display enhancements, including:
  - › Touch screens: capacitive, resistive, more
  - › Optical bonding for increased display clarity and shatter resistance
  - › Extended operating and storage temperature range
- » Remote control via serial/Ethernet
- » Variety of AC-DC power inputs

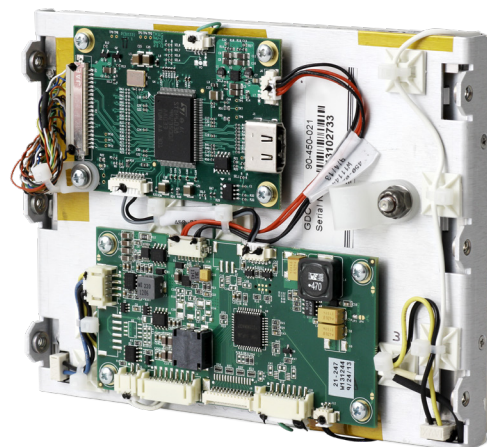
# IMPACT LCD MONITOR KITS

## 6" DISPLAY (Popular models listed—alternate configurations available upon request)

Properties	06V-105	06V-9005	06X-9004
Size (diagonal)	6.5"	6.5"	6.5"
Viewing Area (W x H)	5.22" x 3.91"	5.22" x 3.91"	5.20" x 3.90"
Resolution (pixels)	640 x 480	640 x 480	1024 x 768
Number of Colors	16.2 Million	16.7 Million	16.7 Million
Luminance (0° maximum)	700 Nits	600 Nits	650 Nits
Contrast (maximum)	1000:1	800:1	500:1
Response Time (rise/decay)	15/10 ms	3/15 ms	6/19 ms
Viewing Angle (horizontal – L/R)	±80°	±80°	±80°
Viewing Angle (vertical – U/D)	±70°	±80°	+80°, -60°
Shock <sup>1</sup>	50 G, 20 ms ½ Sine Wave	54 G, 11 ms ½ Sine Wave	54 G, 11 ms ½ Sine Wave
Vibration <sup>1</sup>	1.5 G (10–200 Hz)	2.0 G (5–100 Hz)	2.0 G (5–100 Hz)
Temperature, Operating	-30° to 85°C	-30° to 80°C	-20° to 70°C
Temperature, Storage	-30° to 85°C	-30° to 80°C	-30° to 80°C
Humidity, Operating	5% to 95% RH Non-condensing	5% to 95% RH Non-condensing	5% to 95% RH Non-condensing
Humidity, Storage	5% to 95% RH Non-condensing	5% to 95% RH Non-condensing	5% to 95% RH Non-condensing
Kit Dimensions (H x W x D) <sup>2</sup>	7.50" x 9.25" x 2.43"		
Construction	5052-H32 Aluminum Mounting Panel		
Finish	Clear Iridite®		
Weight, Operating	3 Pounds		
Weight, Shipping	8 Pounds		
Power Input (default)	+12 Vdc		



Impact Solar NVIS 6.5 is equipped with an optional sunlight readable and NVIS compatible display, and also features a touch screen, EMI mesh and heater



Screenshot courtesy of Skeeze /Pixabay

# IMPACT LCD MONITOR KITS

## 8" DISPLAY (Popular models listed—alternate configurations available upon request)

Properties	08S-166	08S-9007	08X-917
Size (diagonal)	8.4"	8.4"	8.4"
Viewing Area (W x H)	6.71" x 5.03"	6.71" x 5.03"	6.71" x 5.03"
Resolution (pixels)	800 x 600	800 x 600	1024 x 768
Number of Colors	16.2 Million	16.7 Million	16.7 Million
Luminance (0° maximum)	450 Nits	800 Nits	600 Nits
Contrast (maximum)	600:1	800:1	1000:1
Response Time (rise/decay)	20/10 ms	3/15 ms	13/12 ms
Viewing Angle (horizontal – L/R)	±80°	±80°	±88°
Viewing Angle (vertical – U/D)	+80°/-60°	±80°	±88°
Shock <sup>1</sup>	50 G, 20 ms ½ Sine Wave	54 G, 11 ms ½ Sine Wave	54 G, 11 ms ½ Sine Wave
Vibration <sup>1</sup>	1.5 G (10–200 Hz)	2.0 G (5–100 Hz)	2.0 G (5–100 Hz)
Temperature, Operating	-30° to 85°C	-30° to 80°C	-20° to 70°C
Temperature, Storage	-30° to 85°C	-30° to 80°C	-30° to 80°C
Humidity, Operating	10% to 90% RH Non-condensing	10% to 90% RH Non-condensing	10% to 90% RH Non-condensing
Humidity, Storage	10% to 90% RH Non-condensing	10% to 90% RH Non-condensing	10% to 90% RH Non-condensing
Kit Dimensions (H x W x D) <sup>2</sup>	8.30" x 9.40" x 2.09"		
Construction	5052-H32 Aluminum Mounting Panel		
Finish	Clear Iridite®		
Weight, Operating	4 Pounds		
Weight, Shipping	9 Pounds		
Power Input (default)	+12 Vdc		

# IMPACT LCD MONITOR KITS

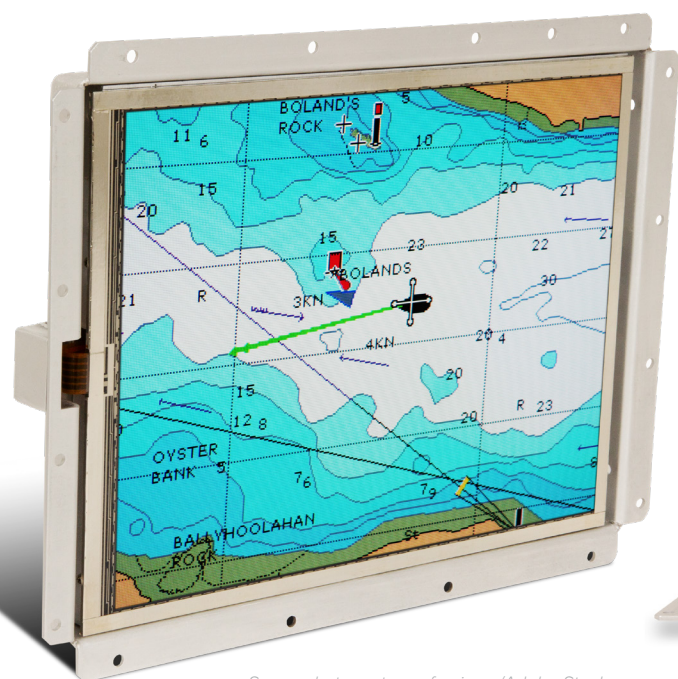
## 10" DISPLAY (Popular models listed—alternate configurations available upon request)

Properties	10V-212
Size (diagonal)	10.4"
Viewing Area (W x H)	8.31" x 6.24"
Resolution (pixels)	640 x 480
Number of Colors	262,144
Luminance (0° maximum)	500 Nits
Contrast (maximum)	1500:1
Response Time (rise/decay)	14/9 ms
Viewing Angle (horizontal – L/R)	±88°
Viewing Angle (vertical – U/D)	±88°
Shock <sup>1</sup>	200 G, 2 ms ½ Sine Wave
Vibration <sup>1</sup>	1.5 G (10–200 Hz)
Temperature, Operating	-30° to 80°C
Temperature, Storage	-30° to 80°C
Humidity, Operating	10% to 90% RH Non-condensing
Humidity, Storage	10% to 90% RH Non-condensing
Kit Dimensions (H x W x D) <sup>2</sup>	9.50" x 11.63" x 2.50"
Construction	5052-H32 Aluminum Mounting Panel
Finish	Clear Iridite®
Weight, Operating	5 Pounds
Weight, Shipping	10 Pounds
Power Input (default)	+12 Vdc

# IMPACT LCD MONITOR KITS

**12" DISPLAY** (Popular models listed—alternate configurations available upon request)

Properties	12S-304
Size (diagonal)	12.1"
Viewing Area (W x H)	9.69" x 7.26"
Resolution (pixels)	800 x 600
Number of Colors	16.2 Million
Luminance (0° maximum)	600 Nits
Contrast (maximum)	1500:1
Response Time (rise/decay)	13/12 ms
Viewing Angle (horizontal – L/R)	±89°
Viewing Angle (vertical – U/D)	±89°
Shock <sup>1</sup>	200 G, 2 ms ½ Sine Wave
Vibration <sup>1</sup>	1.5 G (10–300 Hz)
Temperature, Operating	-30° to 70°C
Temperature, Storage	-30° to 80°C
Humidity, Operating	20% to 90% RH Non-condensing
Humidity, Storage	10% to 90% RH Non-condensing
Kit Dimensions (H x W x D) <sup>2</sup>	9.00" x 14.00" x 2.04"
Construction	5052-H32 Aluminum Mounting Panel
Finish	Clear Iridite®
Weight, Operating	6 Pounds
Weight, Shipping	12 Pounds
Power Input (default)	+12 Vdc



Screenshot courtesy of guiney /Adobe Stock

Impact Solar 12.1 high brightness LCD monitor kit with resistive touch screen



# IMPACT LCD MONITOR KITS

## 15" DISPLAY (Popular models listed—alternate configurations available upon request)

Properties	15X-408	15X-409	15X-989	15D-479
Size (diagonal)	15.0"	15.0"	15.0"	15.6"
Viewing Area (W x H)	11.97" x 8.98"	11.97" x 8.98"	11.97" x 8.98"	13.55" x 7.62"
Resolution (pixels)	1024 X 768	1024 x 768	1024 x 768	1920 x 1080
Number of Colors	16.7 Million	16.2 Million	16.7 Million	16.7 Million
Luminance (0° maximum)	400 Nits	400 Nits	600 Nits	400 Nits
Contrast (maximum)	600:1	700:1	600:1	700:1
Response Time (rise/decay)	6/2 ms	5.7/2.3	3/5 ms	8 ms (total)
Viewing Angle (horizontal – L/R)	±80°	±80°	±80°	±80°
Viewing Angle (vertical – U/D)	±80°	+60°/-80°	±80°	±70°
Shock <sup>1</sup>	30 G, 11 ms ½ Sine Wave	50 G, 20 ms ½ Sine Wave	30 G, 11 ms ½ Sine Wave	50 G, 20 ms ½ Sine Wave
Vibration <sup>1</sup>	1.0 G (5–100 Hz)	1.5 G (10–200 Hz)	1.0 G (5–100 Hz)	1.5 G (10–200 Hz)
Temperature, Operating	-20° to 70°C	-30° to 85°C	-20° to 70°C	-10° to 70°C
Temperature, Storage	-30° to 85°C	-30° to 85°C	-30° to 80°C	-20° to 70°C
Humidity, Operating	8% to 90% RH Non-condensing	8% to 90% RH Non-condensing	8% to 90% RH Non-condensing	8% to 95% RH Non-condensing
Humidity, Storage	8% to 90% RH Non-condensing	8% to 90% RH Non-condensing	8% to 90% RH Non-condensing	5% to 95% RH Non-condensing
Kit Dimensions (H x W x D) <sup>2</sup>	11.22" x 14.22" x 1.99"	11.22" x 14.22" x 1.99"	11.22" x 14.22" x 1.99"	TBD
Construction	5052-H32 Aluminum Mounting Panel			
Finish	Clear Iridite®			
Weight, Operating	8 Pounds			
Weight, Shipping	14 Pounds			
Power Input (default)	+12 Vdc			

# IMPACT LCD MONITOR KITS

## 17" DISPLAY (Popular models listed—alternate configurations available upon request)

Properties	17W-510	17W-956 <sup>3</sup>	17D-524
Size (diagonal)	17.0"	17.0"	17.3"
Viewing Area (W x H)	13.30" x 10.64"	13.30" x 10.64"	15.03" x 8.46"
Resolution (pixels)	1280 x 1024	1280 x 1024	1920 x 1080
Number of Colors	16.7 Million	16.7 Million	16.7 Million
Luminance (0° maximum)	350 Nits	930 Nits	400 Nits
Contrast (maximum)	1000:1	810:1	600:1
Response Time (rise/decay)	3.5/1.5 ms	3.5/1.5 ms	37/3 ms
Viewing Angle (horizontal – L/R)	±85°	±85°	±80°
Viewing Angle (vertical – U/D)	±85°	±85°	+60°/-80°
Shock <sup>1</sup>	50 G, 20 ms ½ Sine Wave	50 G, 20 ms ½ Sine Wave	50 G, 20 ms ½ Sine Wave
Vibration <sup>1</sup>	1.5 G (10–200 Hz)	1.5 G (10–200 Hz)	1.5 G (10–200 Hz)
Temperature, Operating	-30° to 85°C	-30° to 85°C	0° to 70°C
Temperature, Storage	-30° to 85°C	-30° to 85°C	-20° to 70°C
Humidity, Operating	8% to 90% RH Non-condensing	8% to 90% RH Non-condensing	5% to 95% RH Non-condensing
Humidity, Storage	8% to 90% RH Non-condensing	8% to 90% RH Non-condensing	5% to 95% RH Non-condensing
Kit Dimensions (H x W x D) <sup>2</sup>	12.18" x 16.23" x 2.22"		
Construction	5052-H32 Aluminum Mounting Panel		
Finish	Clear Iridite®		
Weight, Operating	8 Pounds		
Weight, Shipping	14 Pounds		
Power Input (default)	+12 Vdc		

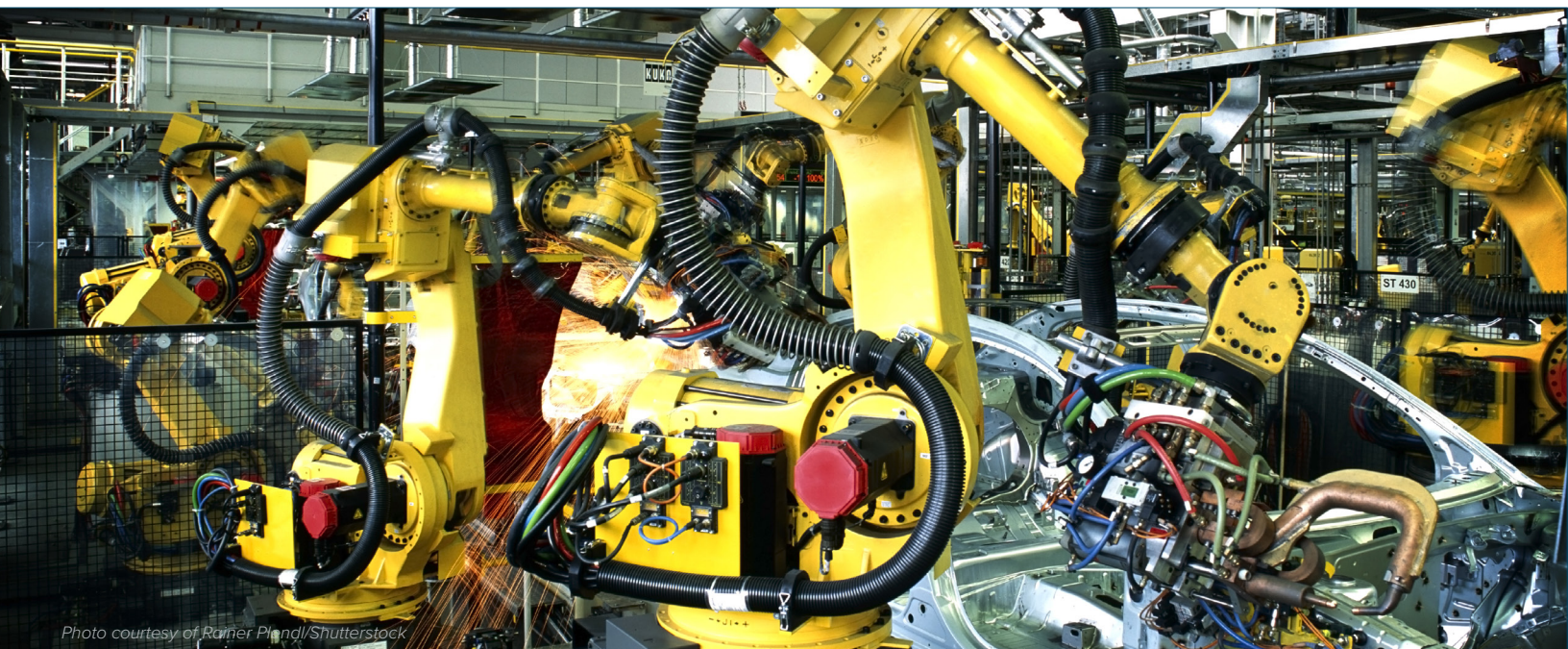


Photo courtesy of Ramier Plang/Shutterstock

# IMPACT LCD MONITOR KITS

## 19" DISPLAY (Popular models listed—alternate configurations available upon request)

Properties	19W-701	19W-711	19W-993 <sup>3</sup>
Size (diagonal)	19.0"	19.0"	19.0"
Viewing Area (W x H)	14.81" x 11.85"	14.81" x 11.85"	14.81" x 11.85"
Resolution (pixels)	1280 x 1024	1280 x 1024	1280 x 1024
Number of Colors	16.7 Million	16.7 Million	16.7 Million
Luminance (0° maximum)	350 Nits	450 Nits	1000 Nits
Contrast (maximum)	1000:1	1000:1	700:1
Response Time (rise/decay)	3.6/1.4 ms	7/3 ms	3.6/1.4 ms
Viewing Angle (horizontal – L/R)	±85°	±85°	±85°
Viewing Angle (vertical – U/D)	±80°	±80°	±80°
Shock <sup>1</sup>	50 G, 20 ms ½ Sine Wave	50 G, 20 ms ½ Sine Wave	50 G, 11 ms ½ Sine Wave
Vibration <sup>1</sup>	1.5 G (10–200 Hz)	1.5 G (10–200 Hz)	1.5 G (10–300 Hz)
Temperature, Operating	0° to 50°C	-30° to 85°C	-30° to 85°C
Temperature, Storage	-20° to 60°C	-30° to 85°C	-30° to 85°C
Humidity, Operating	5% to 90% RH Non-condensing	5% to 95% RH Non-condensing	8% to 90% RH Non-condensing
Humidity, Storage	5% to 90% RH Non-condensing	5% to 95% RH Non-condensing	8% to 90% RH Non-condensing
Kit Dimensions (H x W x D) <sup>2</sup>	13.12" x 16.04" x 2.94"		
Construction	5052-H32 Aluminum Mounting Panel		
Finish	Clear Iridite®		
Weight, Operating	13 Pounds		
Weight, Shipping	19 Pounds		
Power Input (default)	+12 Vdc		



# IMPACT LCD MONITOR KITS

## 20" DISPLAY (Popular models listed—alternate configurations available upon request)

Properties	20U-845
Size (diagonal)	20.1"
Viewing Area (W x H)	16.06" x 12.05"
Resolution (pixels)	1600 x 1200
Number of Colors	16.7 Million
Luminance (0° maximum)	260 Nits
Contrast (maximum)	1000:1
Response Time (rise/decay)	30 ms (total)
Viewing Angle (horizontal – L/R)	±85°
Viewing Angle (vertical – U/D)	±85°
Shock <sup>1</sup>	50 G, 6 ms ½ Sine Wave
Vibration <sup>1</sup>	1.0 G (58–500 Hz)
Temperature, Operating	0° to 50°C
Temperature, Storage	-25° to 60°C
Humidity, Operating	5% to 90% RH Non-condensing
Humidity, Storage	5% to 90% RH Non-condensing
Kit Dimensions (H x W x D) <sup>2</sup>	15.30" x 21.70" x 2.50"
Construction	5052-H32 Aluminum Mounting Panel
Finish	Clear Iridite®
Weight, Operating	14 Pounds
Weight, Shipping	20 Pounds
Power Input (default)	+12 Vdc



Photo courtesy of [trating/Shutterstock](#)

# IMPACT LCD MONITOR KITS

## 22" DISPLAY (Popular models listed—alternate configurations available upon request)

Properties	22D-813	22D-987 <sup>3</sup>
Size (diagonal)	21.5"	21.5"
Viewing Area (W x H)	18.77" x 10.56"	18.77" x 10.56"
Resolution (pixels)	1920 x 1080	1920 x 1080
Number of Colors	16.7 Million	16.7 Million
Luminance (0° maximum)	300 Nits	600 Nits
Contrast (maximum)	5000:1	7430:1
Response Time (rise/decay)	20/5 ms	20/5 ms
Viewing Angle (horizontal – L/R)	±89°	±89°
Viewing Angle (vertical – U/D)	±89°	±89°
Shock <sup>1</sup>	50 G, 20 ms ½ Sine Wave	50 G, 20 ms ½ Sine Wave
Vibration <sup>1</sup>	1.5 G (10–200 Hz)	1.5 G (10–200 Hz)
Temperature, Operating	0° to 60°C	0° to 60°C
Temperature, Storage	-20° to 60°C	-20° to 60°C
Humidity, Operating	5% to 90% RH Non-condensing	10% to 90% RH Non-condensing
Humidity, Storage	5% to 90% RH Non-condensing	10% to 90% RH Non-condensing
Kit Dimensions (H x W x D) <sup>2</sup>	12.75" x 20.75" x 2.50"	
Construction	5052-H32 Aluminum Mounting Panel	
Finish	Clear Iridite®	
Weight, Operating	17 Pounds	
Weight, Shipping	24 Pounds	
Power Input (default)	+12 Vdc	

# IMPACT LCD MONITOR KITS

**24" DISPLAY** (Popular models listed—alternate configurations available upon request)

Properties	24D-819	24D-9014	24K-848
Size (diagonal)	24.0"	24.0"	23.8"
Viewing Area (W x H)	20.92" x 11.77"	20.92" x 11.77"	20.75" x 11.67"
Resolution (pixels)	1920 x 1080	1920 x 1080	3840 x 2160
Number of Colors	16.7 Million	16.7 Million	1.07 Billion
Luminance (0° maximum)	300 Nits	600 Nits	300 Nits
Contrast (maximum)	3000:1	3340:1	1000:1
Response Time (rise/decay)	16/9 ms	16/9 ms	9.5 ms (total)
Viewing Angle (horizontal – L/R)	±89°	±89°	±89°
Viewing Angle (vertical – U/D)	±89°	±89°	±89°
Shock <sup>1</sup>	50 G, 20 ms ½ Sine Wave	50 G, 20 ms ½ Sine Wave	50 G, 11 ms ½ Sine Wave
Vibration <sup>1</sup>	1.5 G (10–200 Hz)	1.5 G (10–200 Hz)	1.5 G (10–300 Hz)
Temperature, Operating	0° to 50°C	0° to 50°C	0° to 50°C
Temperature, Storage	-20° to 60°C	-20° to 60°C	-20° to 60°C
Humidity, Operating	5% to 90% RH Non-condensing	5% to 90% RH Non-condensing	20% to 90% RH Non-condensing
Humidity, Storage	5% to 90% RH Non-condensing	5% to 90% RH Non-condensing	10% to 90% RH Non-condensing
Kit Dimensions (H x W x D) <sup>2</sup>	15.30" x 21.70" x 2.50"		
Construction	5052-H32 Aluminum Mounting Panel		
Finish	Clear Iridite®		
Weight, Operating	19 Pounds		
Weight, Shipping	26 Pounds		
Power Input (default)	+12 Vdc		



Photo courtesy of GaudiLab/Shutterstock

# IMPACT LCD MONITOR KITS

## VIDEO CONTROLLER<sup>4</sup>

Properties	117	121	125	132	135
Maximum Resolution @ Vertical Frequency	1920 x 1200 WUXGA @ 60 Hz	1920 x 1200 WUXGA @ 60 Hz	3840 x 2160 4K UHD @ 30, 60 Hz	1440 x 900 WXGA+ @ 60 Hz	1920 x 1200 WUXGA @ 60 Hz
Video Inputs Supported <sup>5,6</sup>	ARGB, DVI-D, HDMI	ARGB, Composite, DVI-I, S-Video	DisplayPort, DVI-I, HDMI (x3)	ARGB, DVI-D	ARGB, Composite, DVI-D, HDMI

## VIDEO STANDARDS SUPPORTED<sup>7</sup>

Analog Computer Video	Digital Computer Video	Composite (Live) Video	HD Video
ARGB, RGB, Separate Sync, Composite Sync, Sync-On-Green, DVI-A, RS-343A (Optional), STANAG 3350 A / B / C (Optional)	DVI-D, HDMI	NTSC, PAL, SECAM, RS-170, S-Video, CCTV	HD-SDI, HDMI

## CALIBRATION

Properties	117	121	125
Interface	On-screen Displays Navigated by 8-button Membrane Pad	On-screen Displays Navigated by 8-button Membrane Pad	On-screen Displays Navigated by 8-button Membrane Pad
Functions	Brightness, Contrast, Saturation, Backlight Brightness, Input Signal, Aspect Size (Scaling), Image Position (Horizontal & Vertical), Utilities	Brightness, Contrast, Saturation, Hue, Sharpness, Backlight Brightness, Input Signal, Aspect Size (Scaling), Image Position (Horizontal & Vertical), Utilities	Volume, Brightness, Contrast, Saturation, Hue, Sharpness, Backlight Brightness, Display Mode, Input Signal, Aspect Size (Scaling), Information
Advanced	Picture-In-Picture (PIP), PIP Size, PIP Position, PIP Transparency, Auto Picture Setup, Auto Color Gain, Wide Screen Mode Detection, Manual Clock/Phase, Auto Source Seek, Auto Power Off, Video Standard, OSD (Position, Timeout, Language [English, Spanish, French, German, Chinese], Transparency, Display Input), Image Freeze, Image Zoom & Pan, Color Temperature, Hot Keys, Backlight Setup	Picture-In-Picture (PIP), PIP Size, PIP Position, PIP Transparency, Auto Picture Setup, Auto Color Gain, Wide Screen Mode Detection, Manual Clock/Phase, Auto Source Seek, Auto Power Off, Video Standard, OSD (Position, Timeout, Language [English, Spanish, French, German, Chinese], Transparency, Display Input), Image Freeze, Image Zoom & Pan, Color Temperature, Hot Keys, Backlight Setup, Image Orientation (Normal, Horizontal Flip, Vertical Flip, Rotate)	Image Rotate, Color Temperature, Gamma, Color Effect, Color Format, OSD (Position, Timeout, Language, Transparency, Rotate, Border Width, Border Color), Picture-In-Picture (PIP), Picture-By-Picture (PBP)

Properties	132	135
Interface	On-screen Displays Navigated by 8-button Membrane Pad	On-screen Displays Navigated by 8-button Membrane Pad
Functions	Brightness, Contrast, Sharpness, Backlight Brightness, Input Signal, Aspect Size (Scaling), Image Position (Horizontal & Vertical), Gamma, Utilities	Brightness, Contrast, Sharpness, Hue, Saturation, Backlight Brightness, Input Signal, Aspect Size (Scaling), Image Position (Horizontal & Vertical), Utilities
Advanced	OSD (Language, Position, Timeout, Transparency), Image Auto Adjust, Color Auto Adjust, Auto Source Seek, Clock, Phase, Color Temperature, Backlight Dimming, Backlight Frequency, Backlight Invert	OSD (Language, Timeout, Transparency), Clock, Phase, Color Temperature, Auto Color Gain, Auto Picture Setup, Auto Source Seek, Auto Power On/Off, Image Orientation, Hot Keys, Backlight Invert, Backlight Dimming, Backlight Frequency, Audio Volume

# IMPACT LCD MONITOR KITS

## I/O CONNECTIONS

Power (DC)	On/Standby (DC)	Analog Video	Composite Video (Optional)	DisplayPort (Optional)	DVI (Optional)	HDMI (Optional)	Touch Screen (Optional)
2W2 or Molex <sup>7</sup>	PCB or Membrane Pad	High Density 15-pin Socket	DE-9, Plug	DisplayPort	DVI-D / DVI-I	HDMI, Type A	DE-9, Socket

## OPTIONS & ACCESSORIES

General Digital provides an ample selection of options and accessories to complement your LCD monitor. A partial listing of popular choices is provided here. Note that certain choices may not work on every monitor. Please visit our Web site for more choices, or inquire with a Sales Engineer to discuss your specific requirements. Also note that nearly all options and accessories are ordered separately, at additional cost.

### DISPLAY OVERLAY (Popular choices listed—contact General Digital for additional selections)

DO Option No.	Description
00	None
02	Clear Float Glass, Antiglare Etch Two Sides
04	Clear Float Glass, Antireflective Coating Two Sides
21	Vandal Shield, Polycarbonate or Acrylic
23	Vandal Shield, Clear Float Glass, Antiglare Etch Two Sides, 2 Panes Bonded (Laminated) Together (Not Bonded to LCD)
24	Vandal Shield, Soda Lime Glass, Chemically Strengthened (Tempered), Antireflective Coating Two Sides
35	Capacitive Touch Screen, Ideal Etch
51	Resistive Touch Screen
65	Resistive Touch Screen, 5-Wire, with Laminated ITO Glass

### POWER SUPPLY (Popular choices listed—contact General Digital for additional selections)

PS Option No.	Input Voltage Range	Output					Frequency Range	Line Entry Module/ Filter	Power Factor Correction
		6.5"–12.1"	15.0"–19.0"	20.1"/21.5"	23.8"	24.0"			
SA30 (Separate) <sup>8</sup>	90–264 Vac	—	66 W/+12 Vdc	—	—	—	47–63 Hz	—	—
SA49 (Separate) <sup>8</sup>	100–264 Vac	30 W/+12 Vdc	—	—	—	—	50–60 Hz	—	—
SP07 (Separate) <sup>8</sup>	85–264 Vac	—	—	—	—	100 W/+12 Vdc	47–63 Hz	Yes	0.95
SP14 (Separate) <sup>8</sup>	85–264 Vac	—	—	—	75 W/+24 Vdc	—	47–63 Hz	Yes	0.99
SP31 (Separate) <sup>8</sup>	90–264 Vac	—	—	100 W/+12 Vdc	—	—	47–63 Hz	—	0.95
0092 (None)	+12 Vdc	Filtering and regulation provided by customer (default selection)							

A separate supply perfectly meets your Impact's power requirements

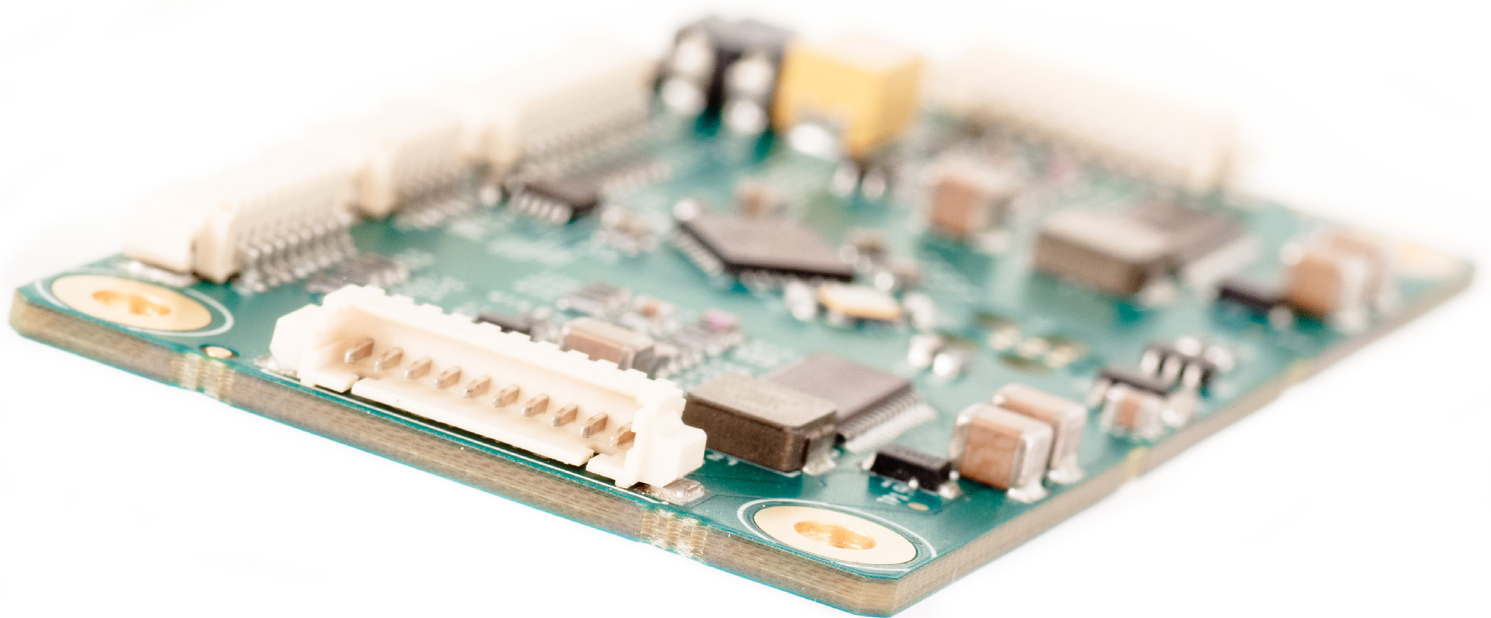


# IMPACT LCD MONITOR KITS

## OPTIONS & ACCESSORIES

### MISCELLANEA

<b>NVIS Compatibility</b>	Night Vision displays in compliance with MIL-STD-3009
<b>Sunlight Readable LCDs</b>	High Brightness displays to 1000+ nits
<b>Optical Enhancements</b>	Bonding of filter and display using indice-matched optical materials; Brightness- and contrast-enhancing films and laminations
<b>Power Supplies</b>	AC and DC supplies; Various input ranges, input frequencies; Separate or attached; Power Factor Correction; AC and DC power cables
<b>Video Accessories</b>	Video cables; Signal extenders; Picture-In-Picture (PIP); Picture-By-Picture (PBP); NTSC   PAL   SECAM   RS-170   S-Video   DisplayPort   DVI-D   HD-SDI   SD-SDI   HDMI   HD Component Support
<b>Remote Control</b>	IR or Serial calibration/control interface
<b>Customization</b>	Custom mechanical and electrical modifications; Custom finishing; Custom software and performance modifications; Private labeling



Optional General Digital-designed LED Controller Board

# IMPACT LCD MONITOR KITS



Custom **Impact 7.0** equipped with a bright, optically-bonded display and projected capacitive touch screen

*Screenshot courtesy of Skeeze/Pixabay*

## FOOTNOTES

- 1 Shock and Vibration data reflect parameters for baseline industrial monitors. Military-grade monitors could sustain even greater shock and vibration levels. Please inquire with a Sales Engineer for more information.
- 2 Standard base mounting panel dimensions listed. For a control drawing with complete dimensions, please contact a Sales Engineer.
- 3 This model has been designed and tested to be in NVIS compliance with MIL-STD-3009. Inquire with a Sales Engineer about obtaining other night vision goggle-compatible models.
- 4 Maximum video resolution listed. Speak with a Sales Engineer for a complete list of available resolutions.
- 5 Primary video inputs listed. Speak with a Sales Engineer about other video modes supported.
- 6 Although the video controllers can support multiple video inputs, space limitations may prevent access to certain connectors or routing of certain cables. Discuss your requirements with a Sales Engineer to devise a configuration that best suits your needs.
- 7 Default connector; specific configuration may require a different connector type.
- 8 Includes 6'7" AC power cable.

999-0903-052r3

**GD GENERAL DIGITAL**  
An SBA Small Business Concern

60 Prestige Park Road  
East Hartford, Connecticut 06108  
Phone 860.282.2900 | Toll-Free 800.952.2535  
E-mail [gdc\\_info@generaldigital.com](mailto:gdc_info@generaldigital.com)



## DISCLAIMER

Information contained in this document is proprietary to General Digital Corporation and is current as of publication date. This document may not be modified in any way without the express written consent of General Digital. Product processing does not necessarily include testing of all parameters. General Digital reserves the right to change the configuration and performance of the product and to discontinue product at any time. **The appearance of U.S. Department of Defense (DoD) visual information does not imply or constitute DoD endorsement.**

© 2021 General Digital Corporation  
All product names are trademarks of their respective companies.