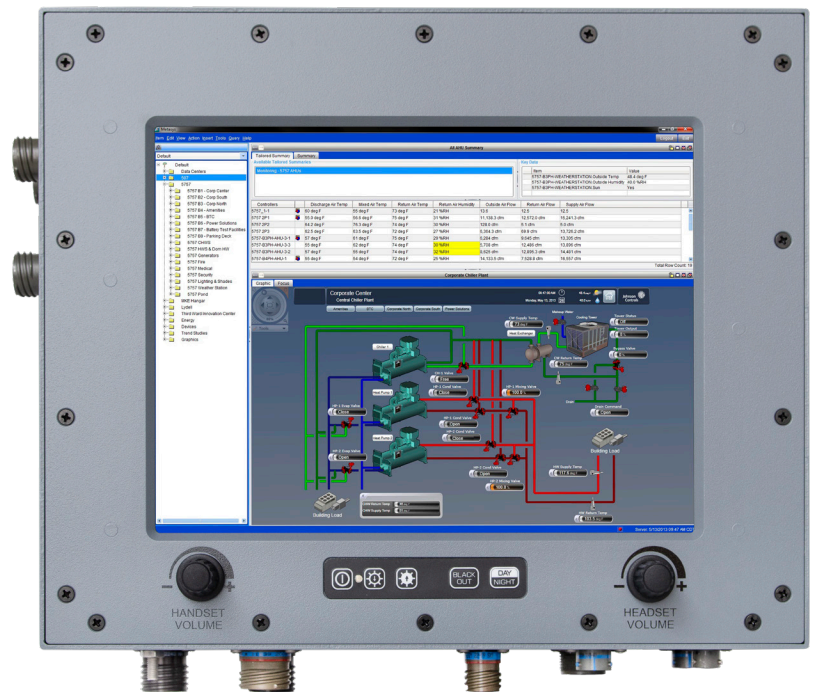


# SABER SMART 10.4

Smart Display Technology in a Military-grade Enclosure

The **Saber Smart™ 10.4** Rugged Display/Computer series integrates our industry-leading ruggedized LCDs and enclosures with cutting-edge embedded processing power, providing an all-in-one military-grade solution.

Leveraging the power of our in-house PCB technicians and embedded systems engineers, the Saber Smart comes with the capability to utilize a full range of CPUs, allowing you as much (or as little) computing power as needed. And our experienced team of mechanical and electrical engineers ensure compliance with MIL-DTL-901, MIL-STD-810, MIL-STD-461, MIL-STD-167, and more.



## FEATURES

- » Embedded Computer (many models available)
- » 10.4" 1024 x 768 sunlight readable and NVIS-compatible display
- » General Digital Intelligent Display Board + Carrier PCB
- » Resistive touch screen with EMI shielding
- » Optically-bonded display for strength and clarity
- » Fiber Ethernet network interface
- » 4 channel audio amplifier
- » Internal Power Supply: 40W, +9–36 Vdc In
- » Military-grade enclosure painted Navy Gray
- » Designed, manufactured, tested, serviced in the U.S.A.

## INPUTS/OUTPUTS

- » DC Power In
- » Network (x2)
- » PTT Rx/Tx
- » Headset
- » Loudspeaker
- » Handset
- » Auxiliary Port
- » Mouse
- » Keyboard
- » DVD Player
- » DVI-D Out



Screenshot courtesy of U.S. Army Corps of Engineers

# SABER SMART 10.4

## DISPLAY SPECIFICATIONS

Display Size	10.4"
Resolution	1024 x 768
Number of Colors	16.7 Million
Luminance (Daylight/NVIS)	800/65 nits
Response Time (Rise/Decay)	30 ms
Viewing Angle (Horizontal/Vertical)	±85°/±85°
Touch Screen	Resistive, EMI Shielded



## COMPUTER SPECIFICATIONS

Processor	Dual-core processor with 3.90 GHz maximum frequency (TurboBoost)
GPU	Intel® Gen. 9 LP Graphics Core Architecture
RAM	16 GB, DDR-4, 2133 MHz
SSD	256 GB, mSATA interface
Network Interface (x2)	Fiber Optic Gigabit Ethernet, RoHS compliant
Operating System	Windows® 10 Pro
Carrier PCB	GDC designed and built <b>Intelligent Display Board</b> and <b>Carrier Power PCB</b>
Audio	GDC designed and built 4 channel audio amplifier

## SYSTEM SPECIFICATIONS

Input Voltage	+9–36 Vdc
Power Consumption (max.)	40 W
Operating Temperature	0° to 50°C
Enclosure Dimensions (HWD)	10.00" x 14.00" x 6.12" (w/o connectors) / 10.79" x 14.00" x 6.94" (w/connectors)
Environmental Compliance	MIL-DTL-901, MIL-STD-810, MIL-STD-461, MIL-STD-167, MIL-STD-1474



60 Prestige Park Road

East Hartford, Connecticut 06108

Phone 860.282.2900 | Toll-Free 800.952.2535

E-mail [gdc\\_info@generaldigital.com](mailto:gdc_info@generaldigital.com)



### General Digital is an SBA Small Business Concern.

The appearance of U.S. Department of Defense (DoD) visual information does not imply or constitute DoD endorsement.

Information contained in this document is proprietary to General Digital Corporation and is current as of publication date. This document may not be modified in any way without the express written consent of General Digital. Product processing does not necessarily include testing of all parameters. General Digital reserves the right to change the configuration and performance of the product and to discontinue product at any time.

© 2024 General Digital Corporation

All product names are trademarks of their respective companies. 999-0902-041r0