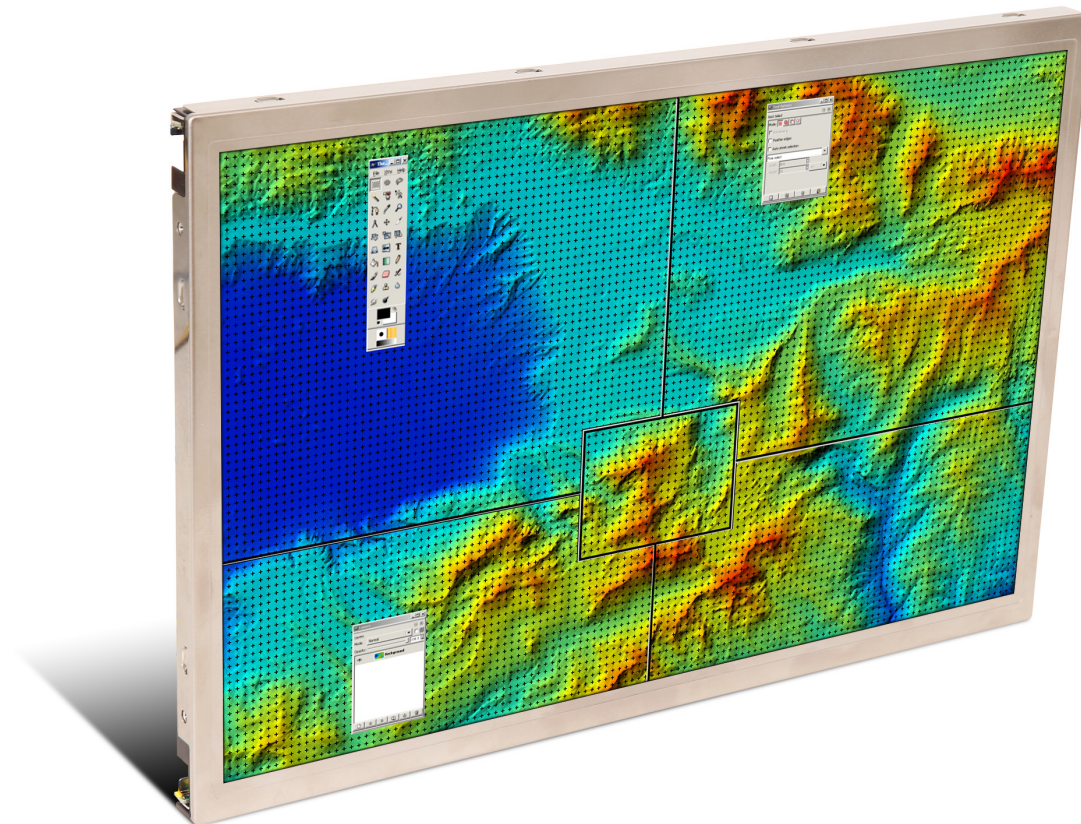


90-4150-011

Enhanced, Sunlight Readable, 15.0" Display Head Assembly



General Digital has designed the AUO G150XTN06.0 15.0" XGA display for integration of a sunlight readable backlight. This AUO display has been customized specifically for use in Military and Government applications.

Please feel welcome to consult with a Sales Engineer for additional information at 800.952.2535.

FEATURES

- > 15.0 inch, 1024 X 768 resolution
- > 4.4:1 Sunlight Readable Contrast
- > Backlight Draws Less Than 14 Watts
- > Sunlight Readable LED Backlight produces 1300+ nits
- > Switchable Between Day/Night and NVIS Modes
- > Fully Dimmable (~1000:1)
- > LVDS (Low Voltage Data Signal)
- > Selectable 8-bit or 6-bit digital signals of RGB
- > Viewing Angle: R/L 80°/80°, U/D 60°/80°
- > Operating Temperature: -30° C~85° C
- > Storage Temperature: -30° C~85° C

OPTIONS

- > Custom Bezels, Enclosures
- > HDMI Video Controller Board
- > Optical Bonding (Display Enhancement)
- > Antireflective or Antiglare Protective Glass Overlay
- > Various Overlays (EMI, Heaters, Vandal Shields, More)
- > Touch Screens (Capacitive, Resistive, Circular Polarized, More)

GENERAL SPECIFICATIONS^{1, 2}

Display Size (diagonal)	15.0 inches
Pixels	1024 (H) x 768 (V)
Display Area (mm)	304.13 (H) x 228.1 (V)
Module Size (mm)	326.5 (W) x 253.5 (H) x 12.0 (D)
Backlight	Sunlight Readable, High Efficiency LED Backlight (General Digital manufactured)
Luminance (dark room) @	Config 1 ⁴ : 1320 cd/m ² @ 1208:1 @ 13.11 W
Contrast (dark room) @ Power ³	Config 2 ⁵ : 430 cd/m ² @ 1212:1 @ 5.29 W
Weber Contrast/Class	Config 1 ⁴ : 4.47/Class 4 Config 2 ⁵ : 1.36/Class 1
Drive System	PSWG TFT Active Matrix
Display Color	16.7 Million Colors
Pixel Arrangement	RGB Vertical Stripe
Dot Pitch (mm)	0.099 (H) x 0.297 (V)
Viewing Angle	Horizontal: ±80°; Vertical: +60°, -80° (at the contrast ratio > 10:1)
Polarizer Surface	Antiglare
Color Gamut (against NTSC color space)	60% typical (at LCD panel center)
Response Time	Ton + Toff (10–90%); 8 ms (typical)
Signal System [8-bit Digital Signals for Data of RGB Colors, Dot Clock (CLK), Data Enable (DE)]	LVDS 1 Port
Power Supply Voltage	LCD Panel Signal Processing Board: 3.3 V
Storage Temperature	-30°–85° C
Operating Temperature	-30°–85° C
Weight	TBD

1 Specifications other than Backlight, Luminance and Weber Contrast are based on the manufacturer data sheet.

2 Available with optional NVIS capability.

3 All data obtained while driven by a Kikisui PAD35-10L power supply. Measurements were taken with a Minolta CS-100 photometer.

4 Rail temperature of 50° C.

5 For customer comparison: At OEM brightness, the modified display consumes less power than the unmodified OEM display.